



MEC

Model Evaluation Comparator

Roberto Garcia
JR Rozante
Silvio Nilo Figueroa

- Highly interactive web-based tool to visualise forecast verifications from different ways. Pilot at: https://garcia-cptec.shinyapps.io/CPTEC_DAILY/
- 3-phase system
 - **Model and observation preprocessing:** meteorological fields are scaled and regridded to a common spatial domain and stored in NetCDF files. **Uses:** shell scripts, grads, and CDO (Climate Data Operators).
 - **Evaluation:** daily-basis forecast evaluation stores the metric results in R binary files distincted by pre established parameters such as: observation, models, lead time, regions, metric, target date, etc. **Uses:** shell scripts, shapefiles and R.
 - **User Interface:** R (Shiny, ggplot, maps, data table, sf) and some HTML.

PREC-MERGE

00 12

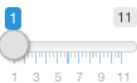
BAM_20km

Eta_40km

GFS_30km

WRF_05km

Lead time



(1 plot)

Date range

201810

202002

Time setting

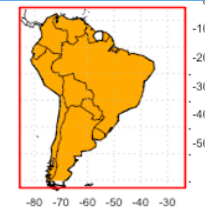
- Daily
- Weekly
- Monthly
- Seasonal

Zones

- S.A. & Brazil
- Brazil states
- Brazil regions
- S.A. countries
- Quadrants

Metrics

- BIAS
- Values
 - Metric average



Metric size # Columns X-axis Resolution (days) 1 2 5 10 15 30

Region: South America Brazil Split regions All-in-one chart

Time series

Taylor

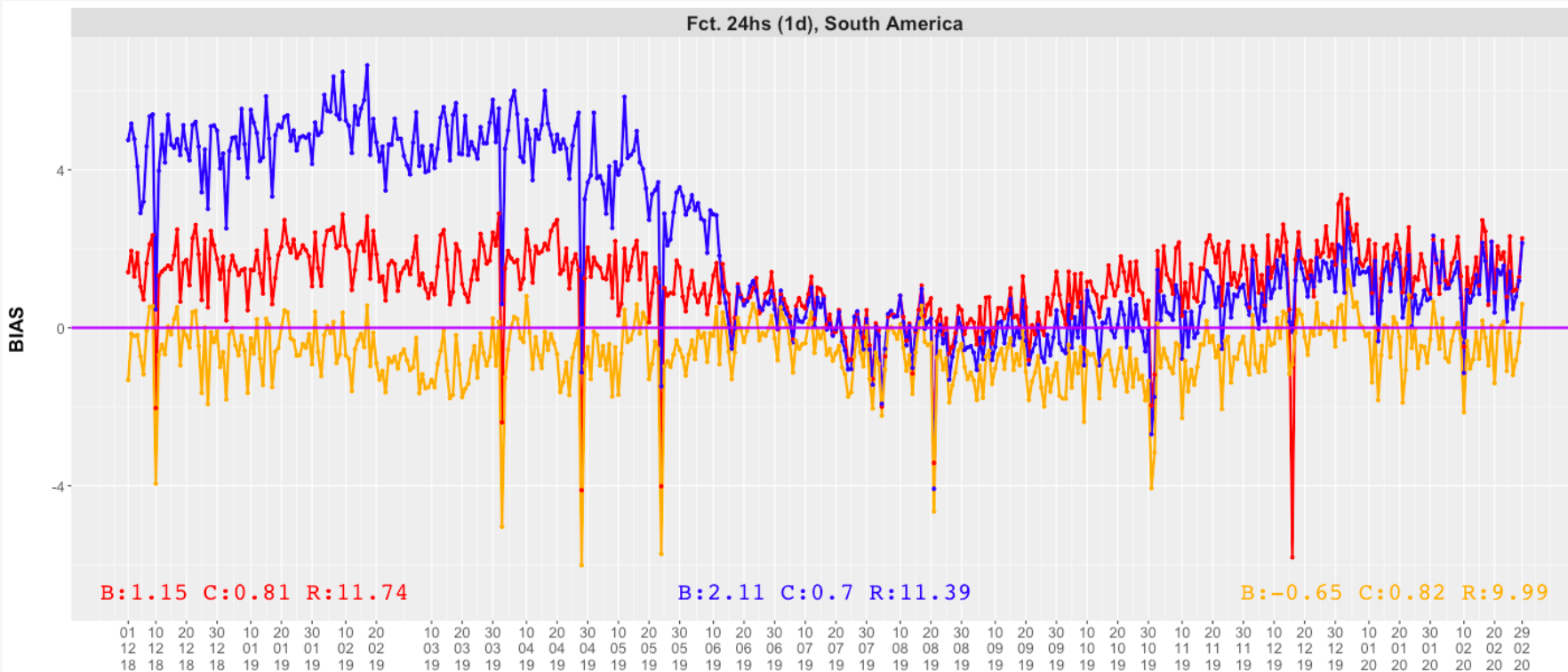
Score card

Maps

Performance

Histograms

Fct. 24hs (1d), South America



PREC-MERGE ▾

Lead time

Date range

Time setting

Zones

Metrics

00 12



202010

Daily

S.A. & Brazil

BIAS ▾

BAM_20km

Weekly

Brazil states

Values

Eta_40km

Monthly

Brazil regions

Metric average

GFS_30km

Seasonal

S.A. countries

WRF_05km

(4 plots)

202011

Quadrants

Metric size ▾

Columns 0

X-axis Resolution (days)

1 2 5 10 15 30

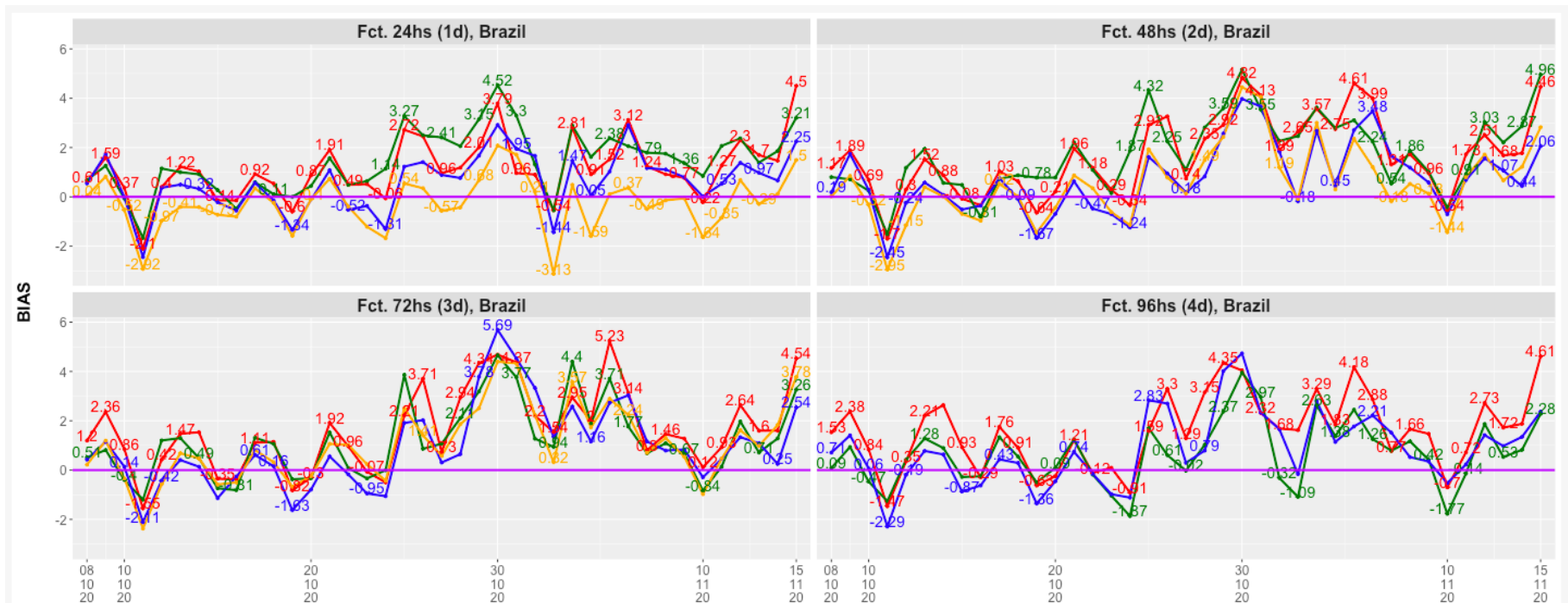
Region: South America Brazil

Split regions

All-in-one chart

BIAS

- BIAS
- RMSE
- URMSE*
- FCT x OBS



PREC-MERGE ▾

00 12

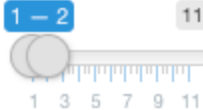
BAM_20km

Eta_40km

GFS_30km

WRF_05km

Lead time



(8 plots)

Date range

202010

202011

Time setting

Daily

Weekly

Monthly

Seasonal

Zones

S.A. & Brazil

Brazil states

Brazil regions

S.A. countries

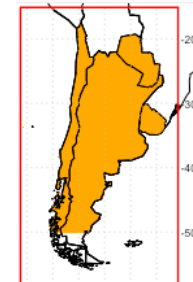
Quadrants

Metrics

BIAS ▾

Values

Metric average



Metric size ▾ ▹

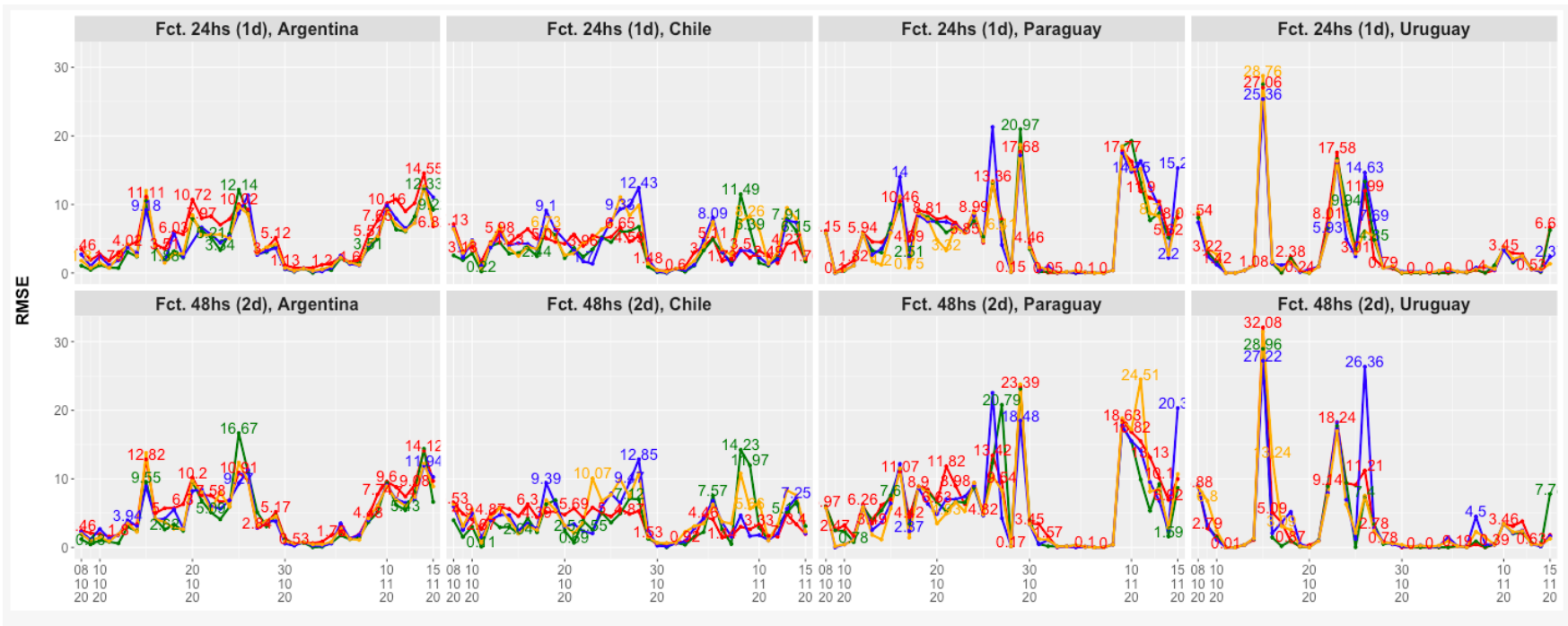
Columns 0

X-axis Resolution (days)

1 2 5 10 15 30

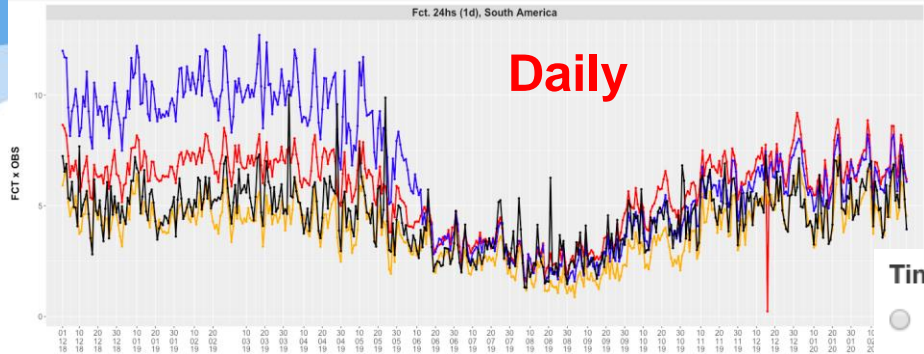
Region: Argentina Bolivia Chile Colombia Ecuador Paraguay Peru Uruguay Venezuela

Split regions



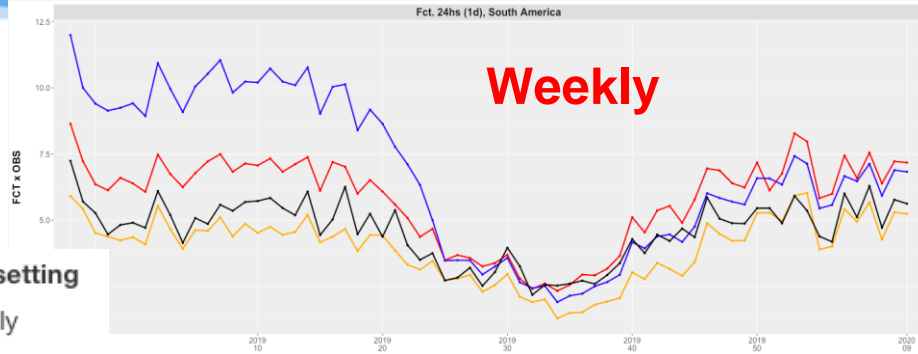
Fct. 24hs (1d), South America

Daily



Fct. 24hs (1d), South America

Weekly

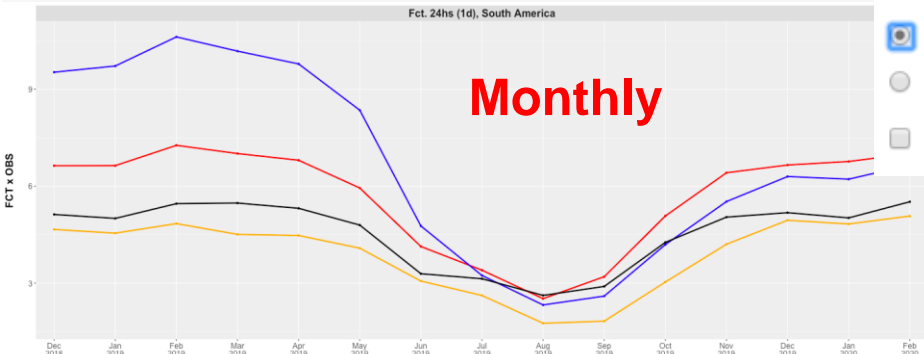


Time setting

- Daily
- Weekly
- Monthly
- Seasonal
- Cycle

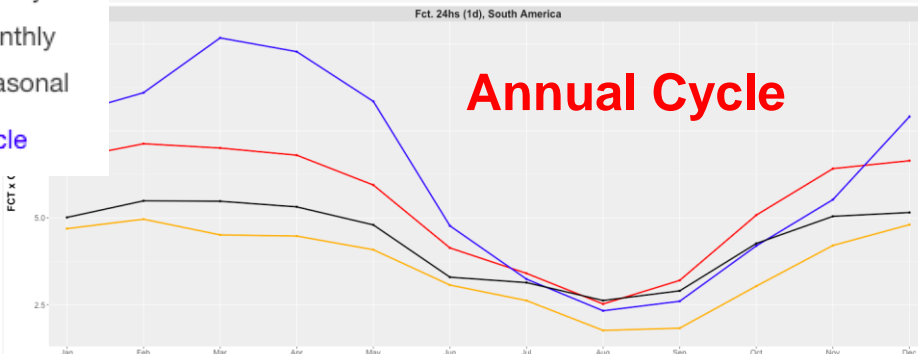
Fct. 24hs (1d), South America

Monthly



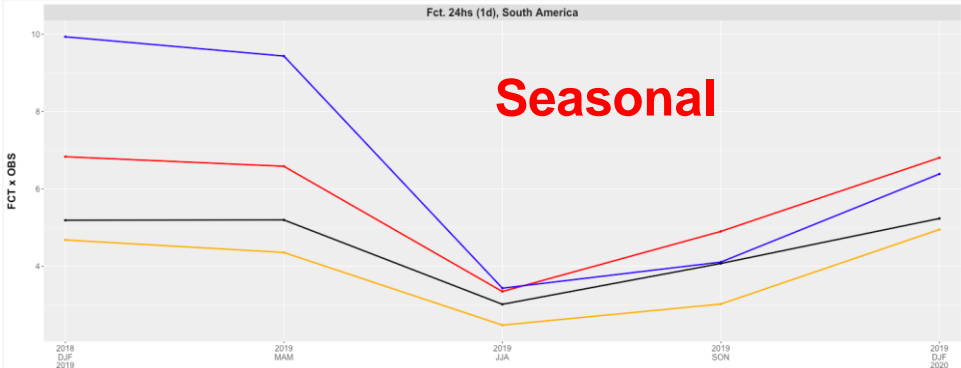
Fct. 24hs (1d), South America

Annual Cycle



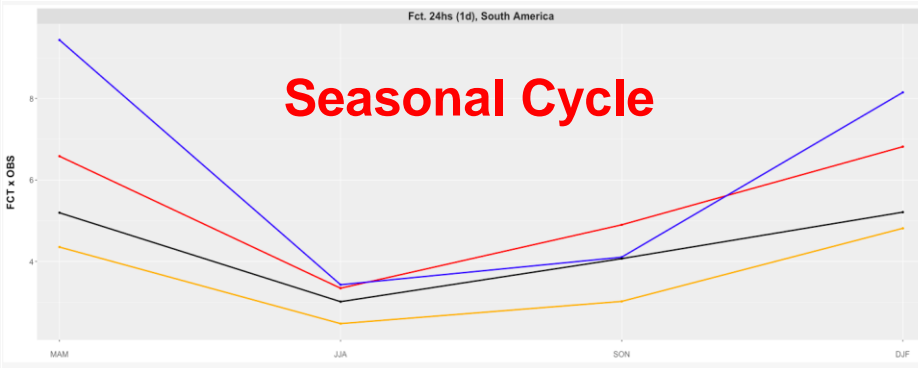
Fct. 24hs (1d), South America

Seasonal



Fct. 24hs (1d), South America

Seasonal Cycle



PREC-MERGE ▾

00 12

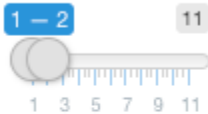
BAM_20km

Eta_40km

GFS_30km

WRF_05km

Lead time



(4 plots)

Date range

202010

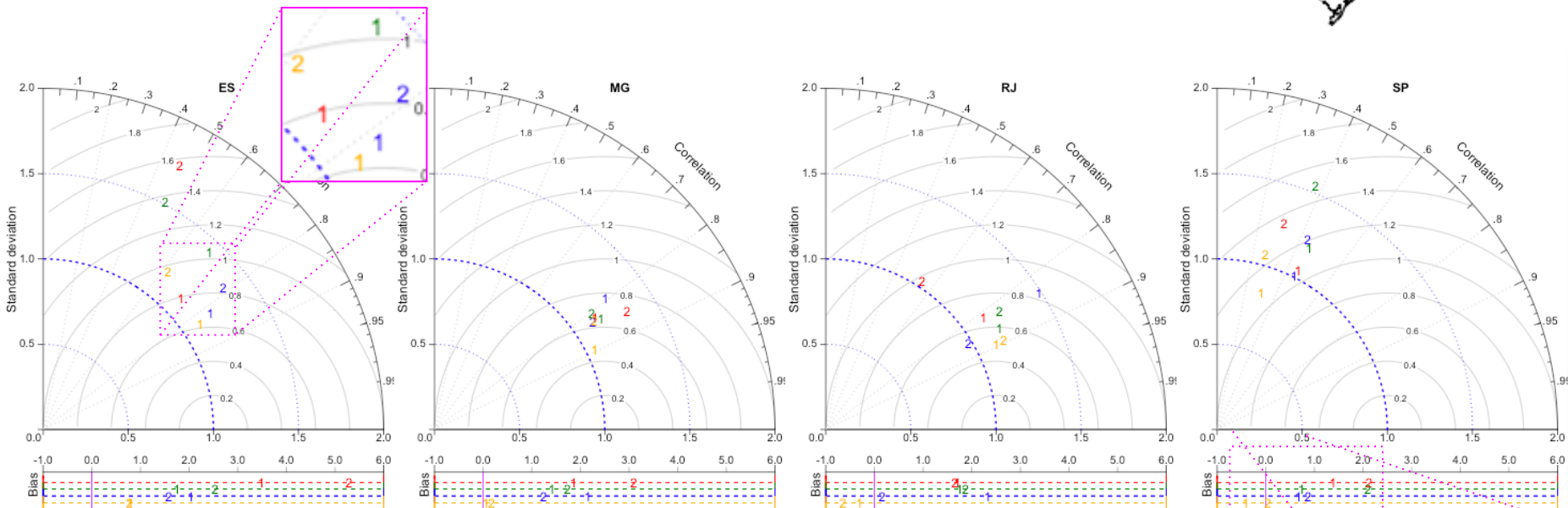
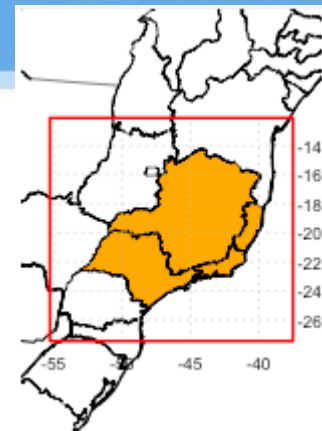
202011

Zones

- S.A. & Brazil
- Brazil states
- Brazil regions
- S.A. countries
- Quadrants

Region: CO N NE S SE

Estates: DF GO MS MT



Modified Taylor plot from the R package
“Plotrix, by Jim Lemon et.al”, includes bias

PREC-MERGE ▾

00 12

BAM_20km

Eta_40km

GFS_30km

WRF_05km

Lead time



(1 plot)

Date range

202010

202011

Zones

- S.A. & Brazil
- Brazil states
- Brazil regions
- S.A. countries
- Quadrants

Metrics

BIAS ▾

BIAS

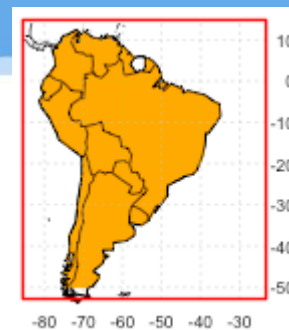
COR

RMSE

Color palette

Bias gradient

Best vs. Worst



Include ocean: No Yes

Period Avg - 202010 a 202011

	BR_AMZ	BR_CO	BR_NE
	1	1	1
BAM_20km	Orange	Orange	Orange
Eta_40km	Red	Green	Green
GFS_30km	Green	Green	Orange
WRF_05km	Orange	Red	Red

Color palette

Bias gradient

Best vs. Worst



Last day - 2020-11-15

	BR_AMZ	BR_CO	BR_NE
	1	1	1
BAM_20km	Red	Red	Red
Eta_40km	Orange	Green	Orange
GFS_30km	Green	Orange	Green
WRF_05km	Orange	Orange	Green

Last 7 days Avg - 2020-11-08 a 2020-11-15

	BR_AMZ	BR_CO	BR_NE
	1	1	1
BAM_20km	Orange	Red	Orange
Eta_40km	Red	Orange	Orange
GFS_30km	Green	Green	Orange
WRF_05km	Orange	Orange	Green

Period Avg - 202011 a 202011

	Colombia			Ecuador			Paraguay		
	1	2	3	1	2	3	1	2	3
BAM_20km	Purple	Purple	Purple	Blue	Blue	Blue	White	Yellow	Yellow
Eta_40km	Purple	Purple	Purple	Blue	Blue	Blue	Blue	Blue	Blue
GFS_30km	Blue	Blue	Blue	Blue	Blue	Blue	Blue	Blue	Blue
WRF_05km	Blue	Blue	Blue	Blue	Blue	Blue	Blue	Blue	Blue

Last day - 2020-11-15

	Colombia			Ecuador			Paraguay		
	1	2	3	1	2	3	1	2	3
BAM_20km	Purple	Purple	Purple	Blue	Blue	Blue	White	Yellow	Yellow
Eta_40km	Purple	Purple	Purple	Blue	Blue	Blue	Blue	Blue	Blue
GFS_30km	Blue	Blue	Blue	Blue	Blue	Blue	Blue	Blue	Blue
WRF_05km	Blue	Blue	Blue	Blue	Blue	Blue	Blue	Blue	Blue

7 days Avg - 2020-11-08 a 2020-11-15

	Colombia			Ecuador			Paraguay		
	1	2	3	1	2	3	1	2	3
BAM_20km	Purple	Purple	Purple	Blue	Blue	Blue	White	Yellow	Yellow
Eta_40km	Purple	Purple	Purple	Blue	Blue	Blue	Blue	Blue	Blue
GFS_30km	Blue	Blue	Blue	Blue	Blue	Blue	Blue	Blue	Blue
WRF_05km	Blue	Blue	Blue	Blue	Blue	Blue	Blue	Blue	Blue

Time setting

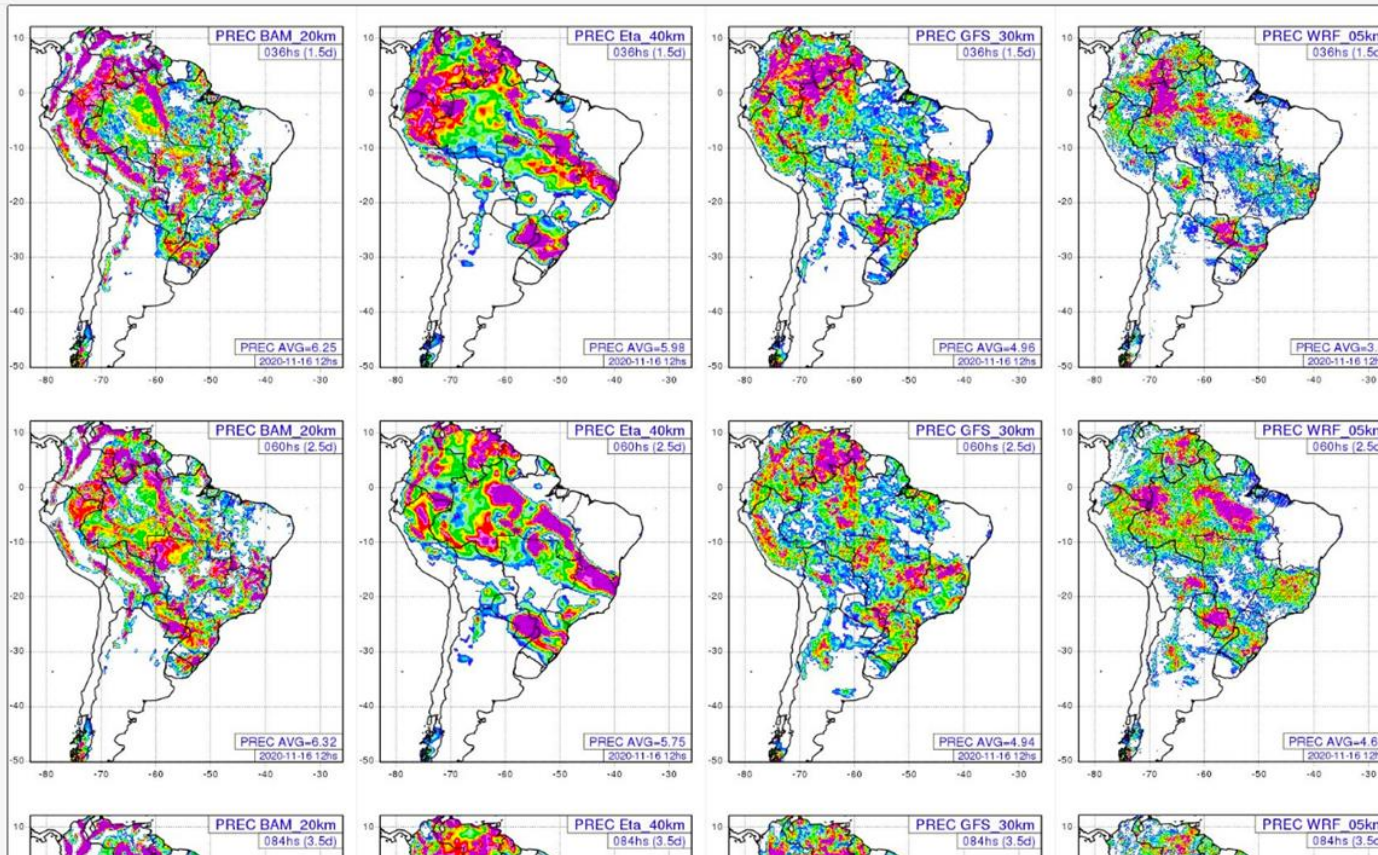
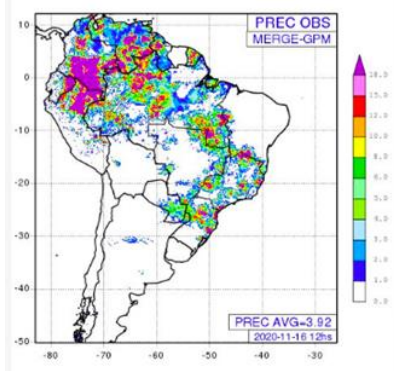
Daily

Monthly

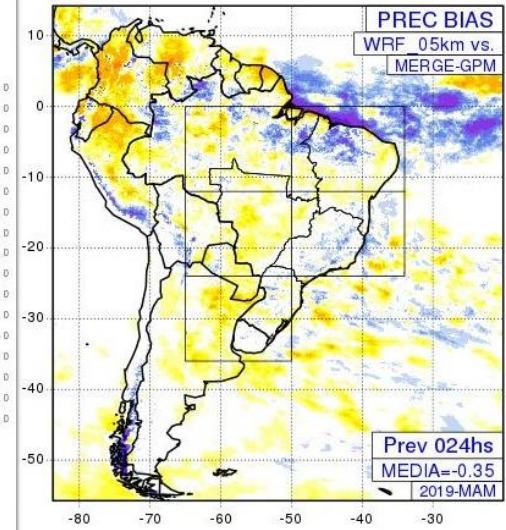
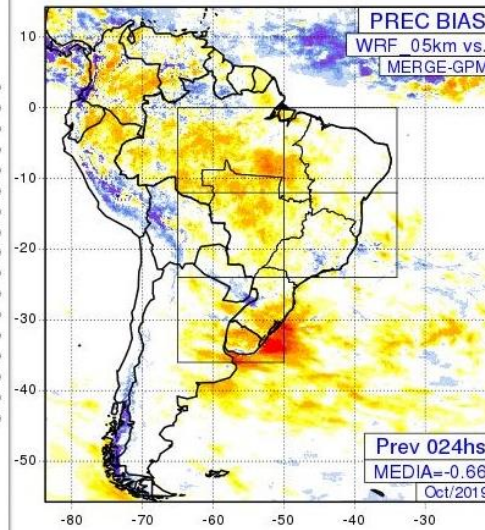
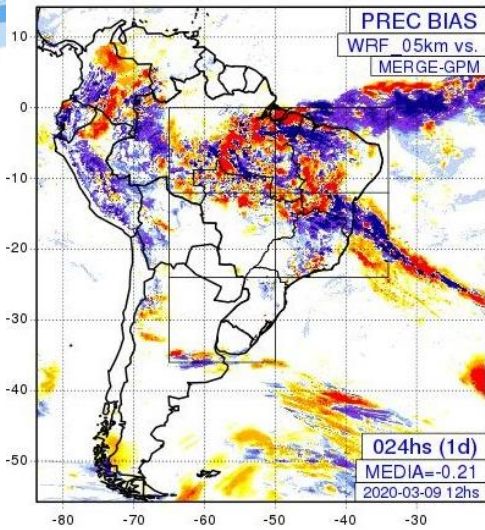
Seasonal

← Up to 5 previous days

← Previous months and seasons average

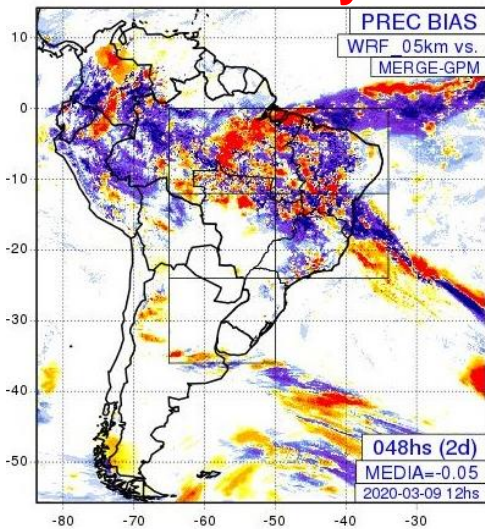


Lead time

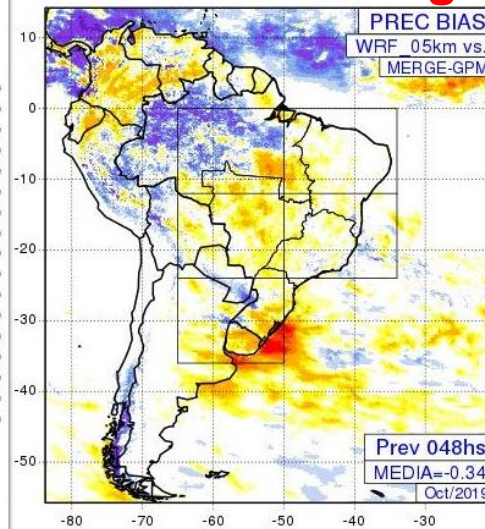


Include ocean:
 No Yes

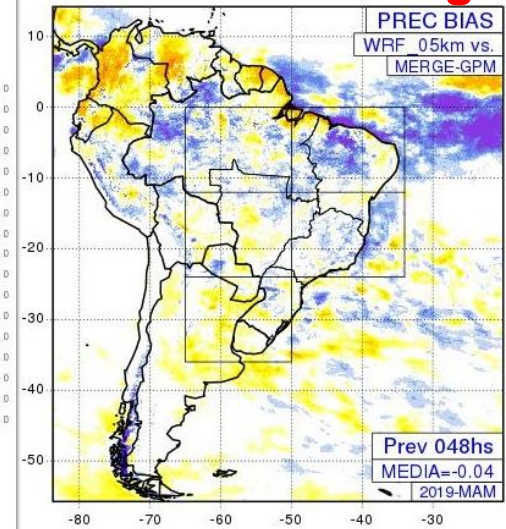
Last day

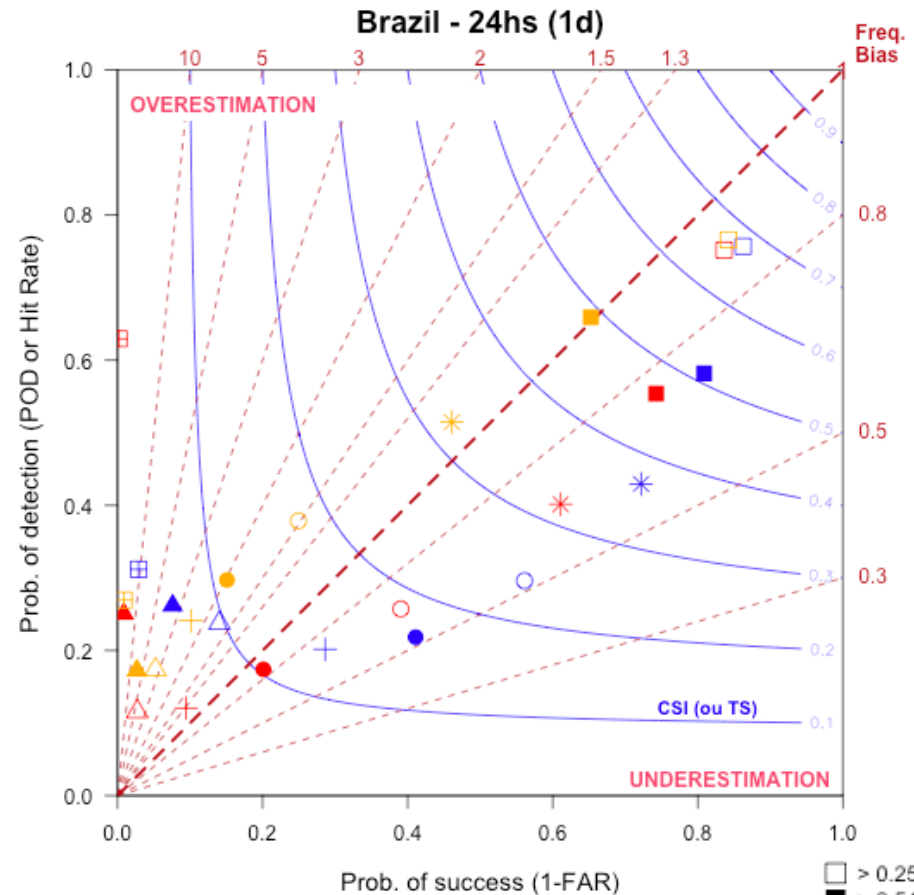
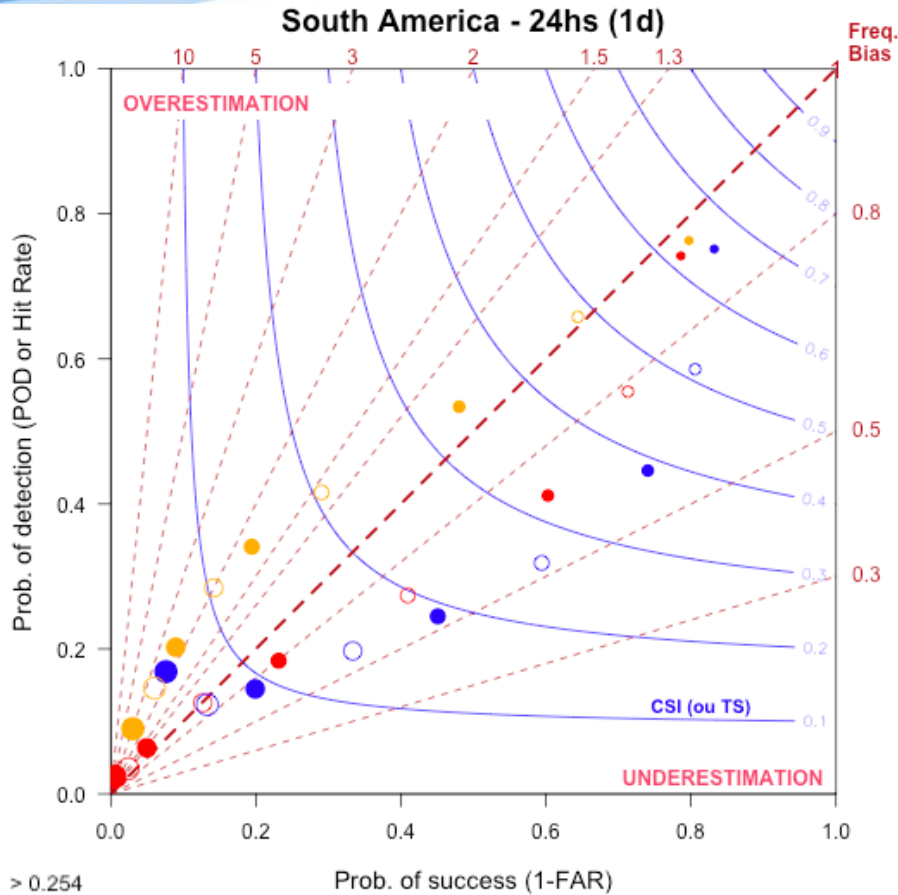


Last month avg



Last season avg

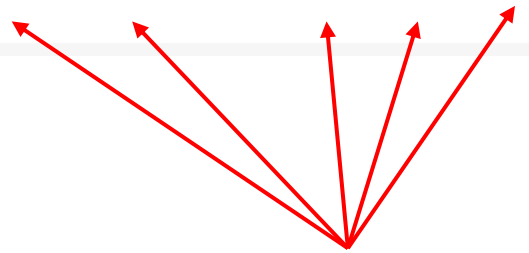
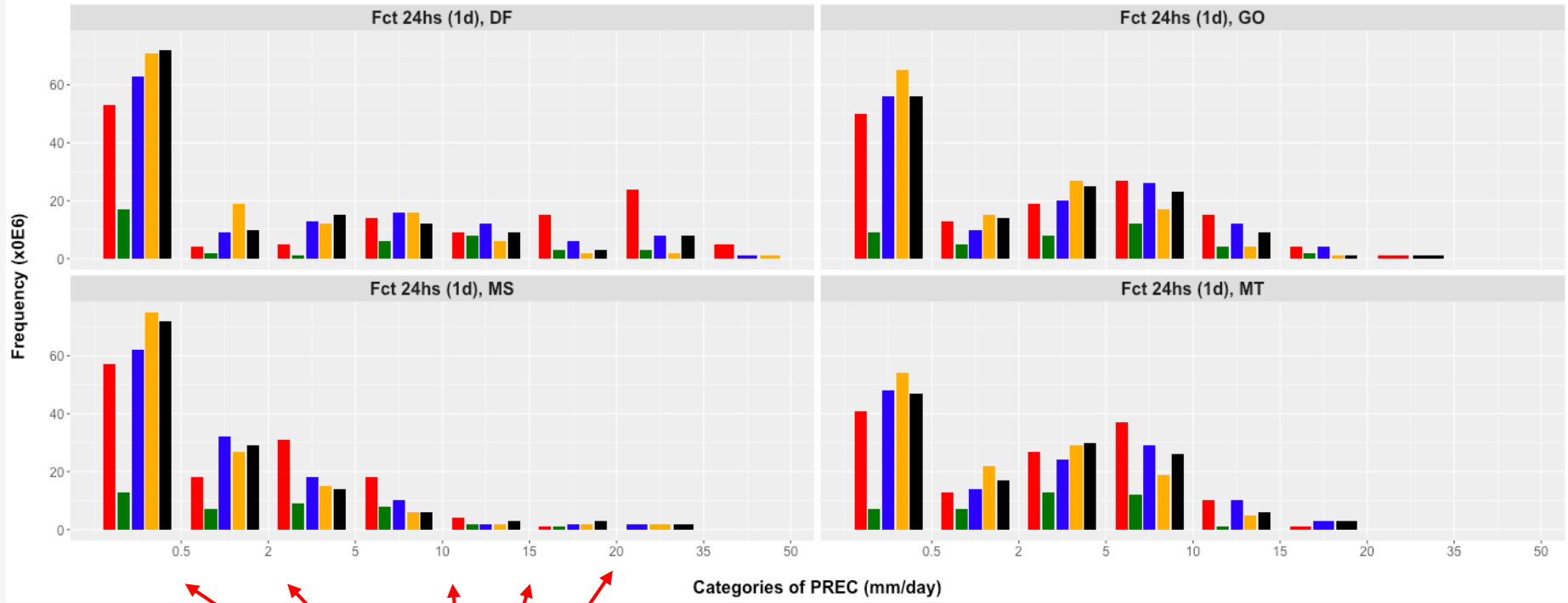




**Modified performance diagram from the R package
"Verification, by Eric Gilleland (NCAR)"**

- > 0.254
- > 2.540
- > 6.350
- > 12.700
- > 19.050
- > 25.400
- > 38.100
- > 50.800
- > 76.200

- > 0.254
- > 2.540
- * > 6.350
- > 12.700
- > 19.050
- + > 25.400
- △ > 38.100
- ▲ > 50.800
- ⊞ > 76.200



Categories

Interactivity and accessibility are the main aspect of MEC

TODO LIST:

- More variables, observations, metrics, plots, ...
- Outliers alert
- Objective evaluation
- Studies on the results: top errors, top hits
- Expand to global models
- MET integration (MEC over MET?)
- SCANTEC integration
- Bug fixes, internationalization (on test)
- ...

MEC

Model Evaluation Comparator



https://garcia-cptec.shinyapps.io/CPTEC_DAILY/

THANK YOU!